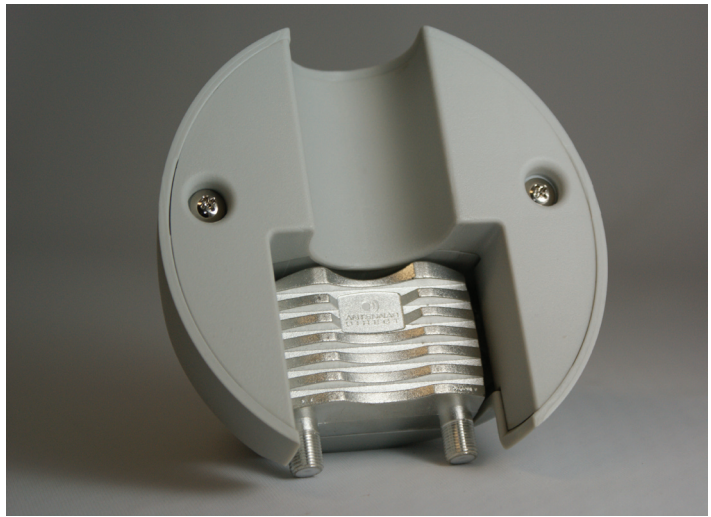




CPA 19 INSTALLATION INSTRUCTIONS

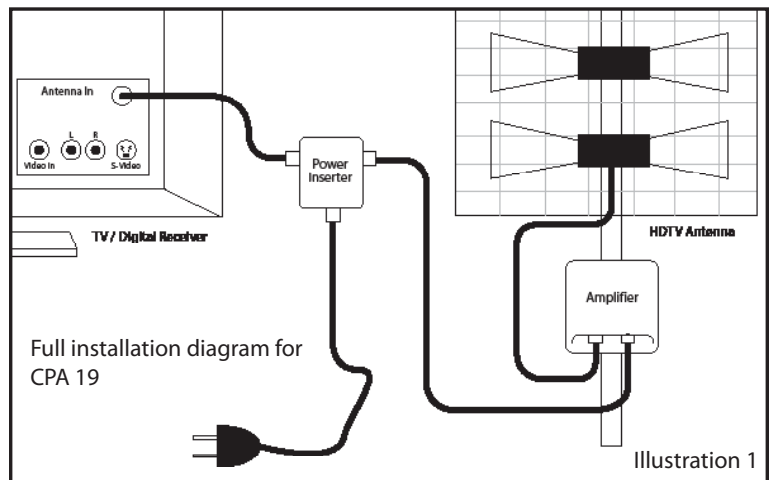


Clearstream Pre- Amplifier Kit

Congratulations! You have purchased a powerful low noise signal amplifier. Typically, if you have a long cable run (100+ ft.) from your antenna to your TV and/or utilize signal splitters in the run, a low noise amplifier such as the CPA19 is your best choice. While an amplifier cannot create a signal that isn't present, you can overcome signal loss caused by these factors with the CPA 19 amplifier.

The CPA 19 Includes:

- Low noise amplifier
- Low loss power inserter
- 3 foot coaxial cable
- 12v DC power supply (for Antenna to amplifier connection)
- 3 foot coaxial cable (for Power inserter to TV, TV/Digital receiver or set-top box connection)
- Mast clamp (not pictured)



Before you install this Amplifier:

Ensure you have chosen the best antenna for your location and that it is aligned correctly for best reception. If you have not already done so or if you wish to confirm the antenna you have is right for your location, visit <http://www.antennapoint.com> for more information and instructions on locating local transmitting towers in your area.

An amplifier works best when amplifying the signal at its strongest point, which is to install it as close to the antenna as possible either in the attic or on the antenna mast on the roof. Your CPA 19 amplifier will perform best when connected properly.

Installation Instructions:

- 1.) If your antenna is already installed, disconnect the down-lead coax cable from your antenna's transformer that runs to your TV,/Digital receiver or set-top box.
- 2.) Connect the supplied 3' cable to your antenna's transformer as shown at the top of illustration 2.

(Your antenna may look different, but the cable connection will be the same.)
Connect the other end of the 3' cable to the amplifier unit from the kit using the "In" port as shown at the bottom of Illustration 2.

- 3.) Attach the amplifier to the antenna mast using the supplied mast clamp.
- 4.) Previous Installation: Attach the down-lead cable that was attached to the antenna's transformer to the "Out" port of the amplifier. You're finished!

For new installation:

Install your down-lead (not supplied) cable which leads to your TV, TV/Digital receiver or set-top box. Connect the down-lead from the amplifier to the RIGHT SIDE port of the power inserter.

See illustration 3 below: "To Amplifier". Do not reverse the connection!!

- 5.) Using the second supplied 3' cable, connect the left port labeled "To Receiver" on the power inserter (illustration 3) to your TV, AV receiver or set-top box. Do not reverse the connection!!
- 6.) Connect the 12v power supply's screw-on f-connector to the bottom connection of the power inserter (illustration 3)
- 7.) Insert the wall plug into any 110 volt AC power source (wall outlet or power strip) close to the TV and ensure that the 110v wall outlet is live – not switched off.

NOTE: there is an internal fuse in the power supply which is designed to blow in the event of a short on the coax cable. If your amplifier quits working for no apparent reason, it is likely the power supply overloaded and blew its fuse. Double check the cables and any junctions for corrosion or a loose strand of braiding that may have come into contact with the copper center conductor, before replacing the power supply.



Illustration 2

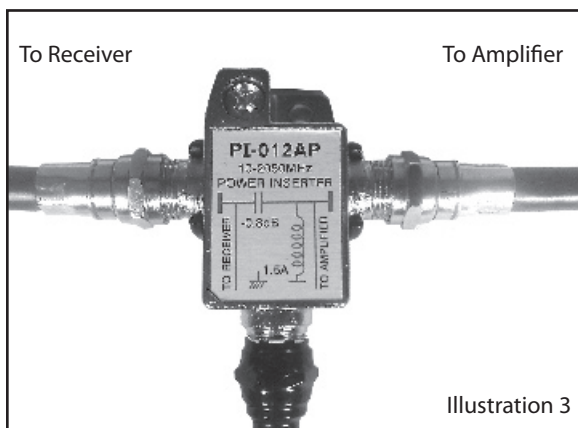


Illustration 3

Important: The power inserter sends power UP your down-lead to drive the amplifier mounted on or near your antenna. The power inserter can be located anywhere in your house, but is usually near your TV. The down-lead also brings the digital antenna signal into your house and the signal passes through the inserter to your TV/Digital Receiver. This eliminates any need for a 110VAC wall power source close to your antenna.

WARNING: TO PREVENT FIRE OR SHOCK HAZARD, DO NOT EXPOSE POWER SUPPLY TO RAIN OR MOISTURE